



HANGER ROD CANOPIES

For more information visit
columbusawningcompany.com

HANGER ROD CANOPY SYSTEMS



A FOUR SEASON CANOPY SOLUTION

The Columbus Awning canopy system is an all-extruded, pre-engineered canopy designed for a high-load architectural applications with optional decking and fascia options. The flat decking and square cap-pan deck options provide a long term, highly durable solution. The flat interlocking decking provides a smooth, sleek profile. The roll formed interlocking decking allows for a value engineered option while still maintaining load capacity and functionality. A variety of different fascia profiles and attachment methods provide a variety of design options to complete the building aesthetics. Compared to the alternatives, our fully welded aluminum gutter systems, non-rusting finish and high-quality extruded materials offer a complete turn-key solution to satisfy any budget and scope.

CANOPY HIGHLIGHTS

- FULLY WELDED 360 GUTTER FRAMES
- ALL EXTRUDED ALUMINUM
- CUSTOM DESIGN AND ENGINEERING AVAILABLE
- PROFESSIONAL DESIGN, COLOR AND FINISHES
- TURNKEY SOLUTIONS FOR MANUFACTURING AND INSTALLATION
- MAINTENANCE AND RUST FREE

TECHNICAL DATA

- Fascia .125"
- Flat Decking .081
- Roll Formed Decking .04"
- Deflection Rating L/180
- Maximum Projection
 - 5' with cantilevered supports
 - 10' or 8' depending on decking selection w/ hanger rod supports



HANGER ROD CANOPY SYSTEMS

DECKING OPTIONS



2 3/4" Cap and Pan
maximum projection 10'

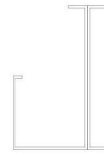
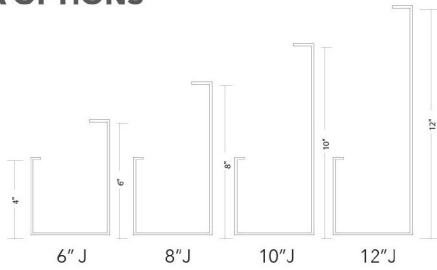


Smooth Decking
maximum projection 8'

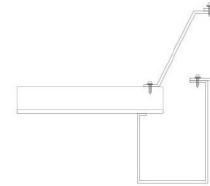


Rolled Form Interlock Decking
maximum projection 10'

FASCIA OPTIONS

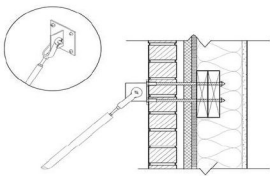


C Channel
available 8", 10", 12"
lip dimension made to request

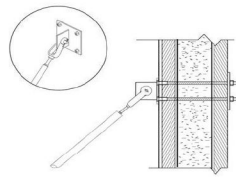


Custom Extensions

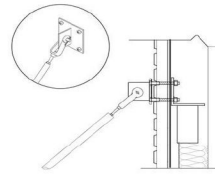
WALL MOUNT/ INSTALLATION



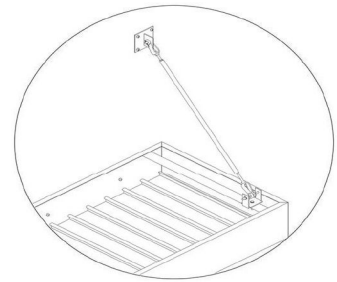
Brick/Block with thru bolts
and compression sleeves



CMU with thru bolt

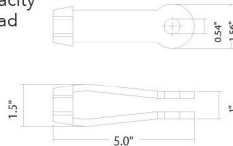


Metal building

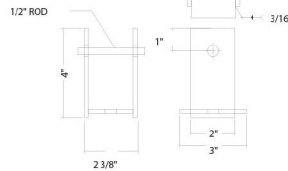


CLEVIS CONNECTIONS AND WALL BRACKETS

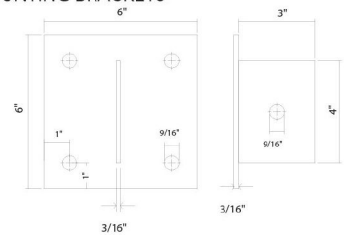
CLEVICES, CL2 (RIGHT AND LEFT)
ASTM A668, C-1035 Steel
3,500 LBS Capacity
1/2" UNC Thread



SADDLE BRACKETS
C - 1035 Steel
3/16 Thickness



SURFACE WALL MOUNTING BRACKETS
C 1035 Steel
3,000 LBS Capacity



FINISH DETAILS

FINISH	DESCRIPTION	WARRANTY	SPECIFICATIONS	APPLICATION
Tiger Drylac Standard RAL	Standard RAL	1 year	Meets AAMA 2603 specifications	Factory applied
Superdurable Tiger Drylac2 Coat	Super Durable RAL Fishishes	10 year	70% Fluoropolymer meets AAMA 2605 specifications	Professionally applied by approved finisher
Belbien or Reatec	Architectural Film	5 year	See finish details	Professionally applied by approved finisher