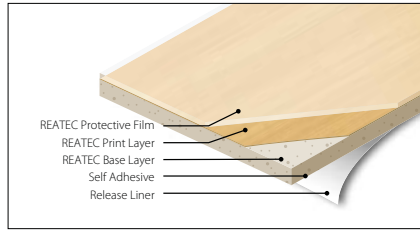


WEATHER RESISTANCE Exterior Application

Highly durable films suitable for exterior applications with weather exposure

Ultraviolet absorption film laminated on top



High Weathering Resistance

The film surface is coated with a high protective, durable UV protection film, preventing deterioration of the REATEC printed layers by sunlight and weather exposure. This laminated film provides approximately 10 years of protection from the effects of weathering, depending on location and exposure. Results may vary. Consult your authorized REATEC Dealer/Installer prior to installation.

Stain Chemical Resistance

The top protective layer of special film contains a special compound to provide additional resistance to exposure to oils, stains and chemicals.





TF4811 ☼ ⓘ Cherry · SF



TF4815 ☼ ⓘ Cherry · SG



TF4819 ☼ ⓘ Walnut · SG



TF4822 ☼ ⓘ Zebrawood · SG



TF4812 ☼ ⓘ Cherry · SF



TF4813 ☼ ⓘ Mahogany · SG



TF4816 ☼ ⓘ Teak · SF



TF4820 ☼ ⓘ Walnut · FG



TF4817 ☼ ⓘ Teak · SF



TF4821 ☼ ⓘ Walnut · SG



TF5241 NEW ☼ ⓘ



TF5242 NEW ☼ ⓘ



TF5243 NEW ☼ ⓘ



TF5245 NEW ☼ ⓘ



TF5247 NEW ☼ ⓘ



TF5249 NEW ☼ ⓘ



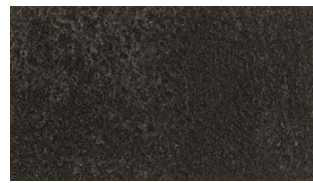
TF5250 NEW ☼ ⓘ



TF5251 NEW ☼ ⓘ



TF5248 NEW ☼ ⓘ



TF5252 NEW ☼ ⓘ

| A

| B

| C

| D

☼ Suitable for exterior use.

ⓘ For additional technical information, please refer to the booklet inside the front cover.

Width : 1,220mm (48 inches)
FG : Flat Grain SG : Straight Grain SF : Straight/Flat Grain