

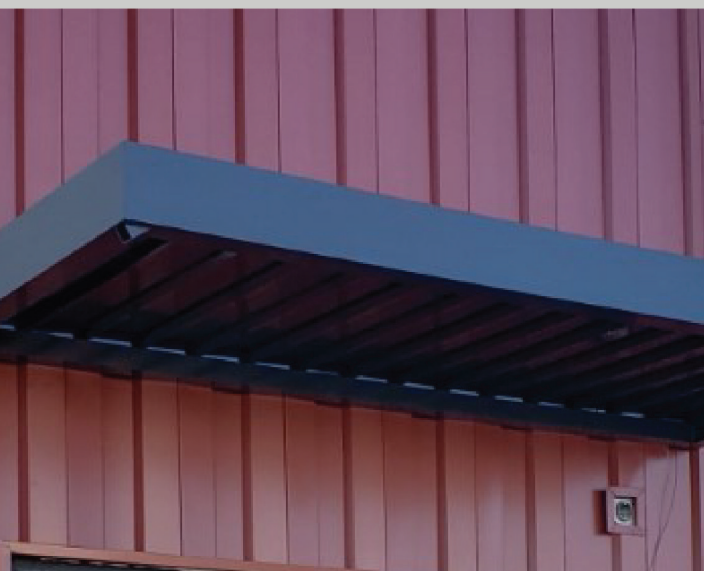
# TREELINE CANTILEVERED CANOPIES

For more information visit  
[columbusawningcompany.com](http://columbusawningcompany.com)



# TREELINE

## CANTILEVERED CANOPY SYSTEMS



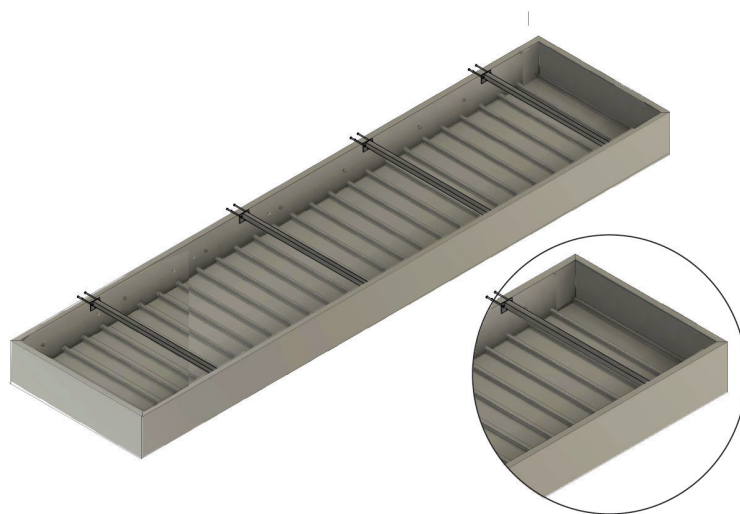
TREELINE Cantilevered Canopies provide a clean, streamlined design to compliment the building design and structure. The cantilevered canopy system is manufactured with specific steel support arms that support up to a five-foot projection. The result is a clean sightline and custom application to the building's required facade. The design can encompass either sunshade management or four-season decking options. The fascia and decking options can be customized to deliver the most flexibility in the field to meet the aesthetics and budget required. It is our mission to provide a truly custom design and turnkey solution to customers all over the U.S.

## CANOPY HIGHLIGHTS

- FULLY WELDED 360 FRAMES AND FASCIA OPTIONS
- ALL EXTRUDED ALUMINUM
- CUSTOM DESIGN AND ENGINEERING AVAILABLE
- PROFESSIONAL DESIGN, COLOR AND FINISHES
- TURNKEY SOLUTIONS FOR MANUFACTURING AND INSTALLATION
- MAINTENANCE AND RUST FREE

## TECHNICAL DATA

Fascia .125"  
Flat Decking .081  
Roll Formed Decking .04"  
Extruded Louvers range from .125" to .025"  
Deflection Rating L/180  
Maximum Projection:  
5' with cantilever supports



COLUMBUS AWNING **Architectural Metals**

297 OLD COUNTY LINE RD, WESTERVILLE, OH 43081    PHONE: (614) 426-4206    COLUMBUSAWNINGCOMPANY.COM



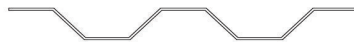
# TREELINE

## CANTILEVERED CANOPY SYSTEMS

### DECKING OR LOUVER OPTIONS



Flat Standard (.081)



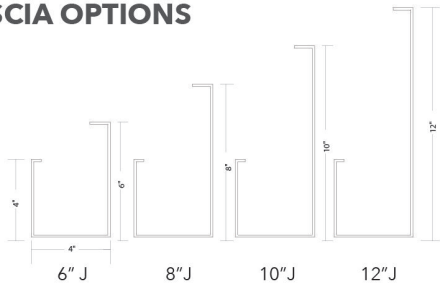
Roll Formed (Gauge Varies)



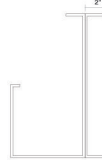
Cap and Pan

"Z" Louver Options. Airfoil Tube and Bar, All-extruded Aluminum (T6-6063)

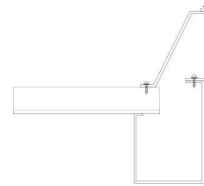
### FASCIA OPTIONS



Custom Dimensions for  
C Channel and Fascia  
Extensions



8" Gutter with 8" C Channel  
available 8", 10", 12"

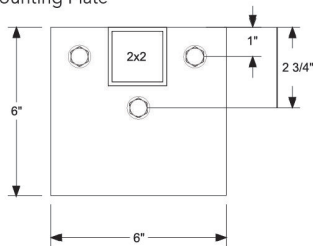


Custom Extensions for  
C Channel and Fascia Extensions

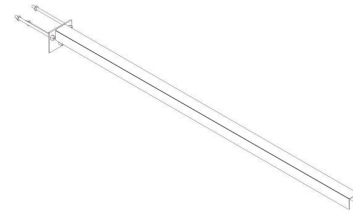
4" to 12" Frame/Fascia Options  
Round, Curved or Bull Nose Options

### MOUNTING OPTIONS

Support Arm Mounting Plate

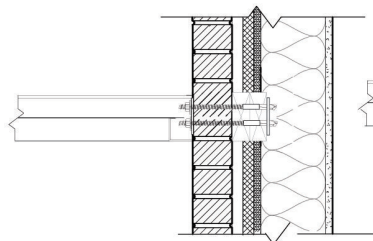
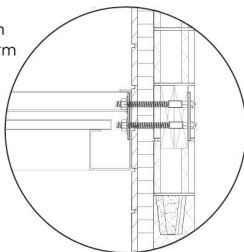


Cantilevered Arms  
2" X 2" X 1/8" Wall Steel Support Arms

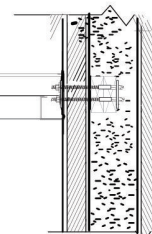


### WALL ATTACHMENT OPTIONS

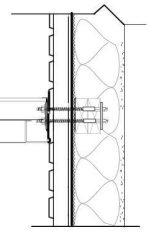
Three 3/8" Through  
Bolts per Support Arm  
2 per section  
5'-0" C to C



Brick/Block Fascias



CMU Fascias



Metal Fascias

FINISH	DESCRIPTION	WARRANTY	SPECIFICATIONS	APPLICATION
Tiger Drylac Standard RAL	Standard RAL	1 year	Meets AAMA 2603 specifications	Factory applied
Superdurable Tiger Drylac2 Coat	Super Durable RAL Fishishes	10 year	70% Fluoropolymer meets AAMA 2605 specifications	Professionally applied by approved finisher
Belbien or Reatec	Architectural Film	5 year	See finish details	Professionally applied by approved finisher

COLUMBUS AWNING **Architectural Metals**

297 OLD COUNTY LINE RD, WESTERVILLE, OH 43081 PHONE: (614) 426-4206 COLUMBUSAWNINGCOMPANY.COM